

DATA SHEET

NB3800B-PRO/270 TD 3M+3M

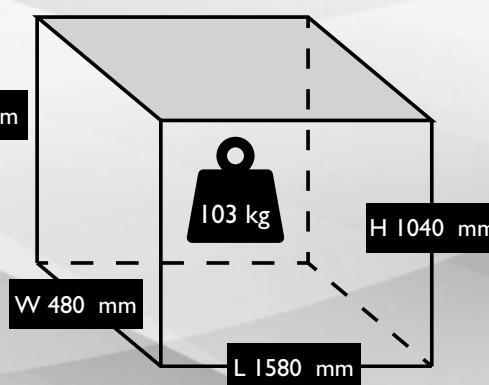
S-36NW505FPS147



UNIT DIMENSIONS



PACKAGE DIMENSIONS



TECHNICAL DATA

	Max. Pressure	10 Bar / 145 PSI
	Power	3.0 HP x 2 / 2.2kW x 2
	Capacity (displacement)	27.90 CFM / 710 L/Min
	Voltage	230 V / 50 Hz
	Supply	32 amp
	FLC	26 amps
	Pump	B38B PRO PUMP x2
	dB(A)	78
	Dimensions L x W x H (unit)	1570 x 470 x 1030 mm

	Dimensions L x W x H (boxed)	1580 x 480 x 1040 mm
	Weight	215 kgs
	Motor Speed	2850 RPM x2
	Oil Capacity	1 Ltr x2
	Receiver Size	270 Ltr
	Head Bolt Torque	27 Nm
	Cable Length	2 Mtr
	Pump Speed	1250 RPM x2
	Outlet Thread Size	Series 25 Coupling



E & OE - Images shown are for illustration and may vary from the actual product

FNA UK (Compressors) Ltd.,  
T/A FPS Air Compressors  
Units 1 & 5, Tower Estate,  
Warpsgrove Lane,  
Chalgrove, Oxon, OX44 7XZ

T: +44(0)1865 892620  
E: sales@fps-compressors.co.uk

www.fna-compressors.co.uk  
www.fps-compressors.co.uk

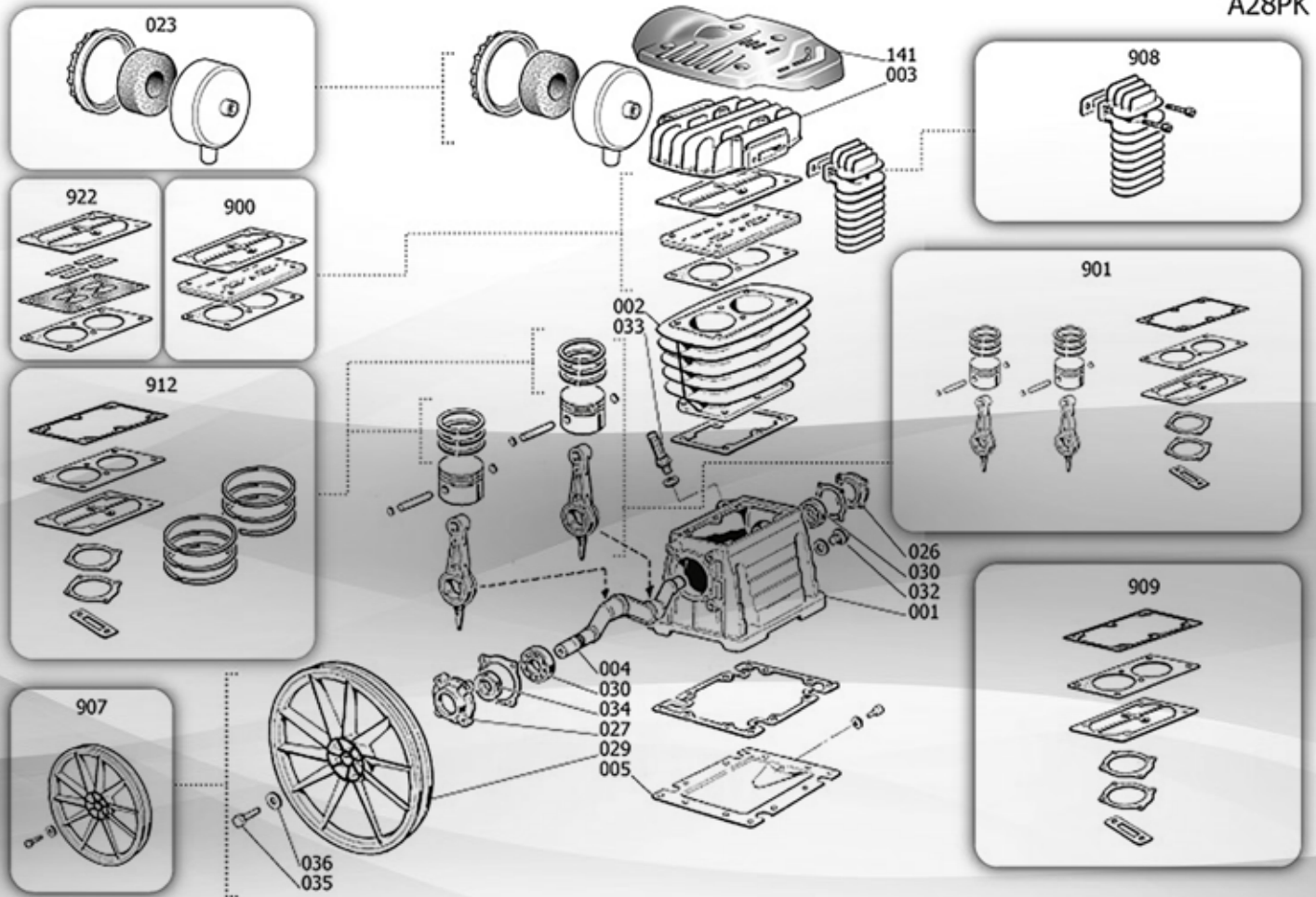


DATA SHEET

# B38B PRO PUMP

370001B

B3800B-PRO/200 FM3 (S-36LN504FPI41)



## COMPONENTS / SERVICE PARTS

Position	Part No.	Description
2	S-9428042	Cylinder
3	S-3860410	Head
23	S-9434M04	Air Filter Kit
900	S-9434A66	Valve Plate
901	S-9434B82	Piston & Con Rod Compl
912	S-9434C09	Piston Ring Kit

Part No.	Description
S-PK-B28.B38/PRO	Service Kit
S-9602024	NRV Pastel
S-9602018	NRV Spring
S-9048009	NRV
S-4100688	Pressure Switch
LUB-PIST-ILT	Lubricant
S-9612113	Run Capacitor (motor)
F-002100105	Start Capacitor (motor)
S-9075001	Belt



E & OE - Images shown are for illustration and may vary from the actual product

FNA UK (Compressors) Ltd.,  
T/A FPS Air Compressors  
Units 1 & 5, Tower Estate,  
Warpsgrove Lane,  
Chalgrove, Oxon, OX44 7XZ

T: +44(0)1865 892620  
E: sales@fps-compressors.co.uk

www.fna-compressors.co.uk  
www.fps-compressors.co.uk

